

Product Sheet



Yalelaan 1
3584 CL Utrecht
The Netherlands
+31 30 253 3421

www.qvquality.com
KvK: 30274082
VAT: 8215.17.168
NL88 RABO0153194936

Near Infrared Dye 800CW (IRDye800CW)

Catalogue no.: Q93c
Clone name: QTI-1C9

Product: VHH directed against IRDye800CW

Target: IRDye800CW is a highly soluble near infrared fluorescent dye which is excited at 774 nm and emits light at 789 nm. Because of these spectral properties, it is often used for in vivo imaging. Conjugates containing IRDye800CW have been used in multiple clinical trials. Besides that, IRDye800CW is used for apparent affinity determinations, cell binding studies On-Cell Western cell-based assays, as well as for protein arrays, microscopy, tissue section imaging, and in vivo imaging and optical probe development.¹⁻³



Source: Recombinant monoclonal VHH (Llama glama), purified from *S.cerevisiae*. Immunization and phage-display selection with IRDye800CW-conjugated VHH using total elution.

Specificity: IRDye800CW and not IRDye680RD or IRDye700DX.

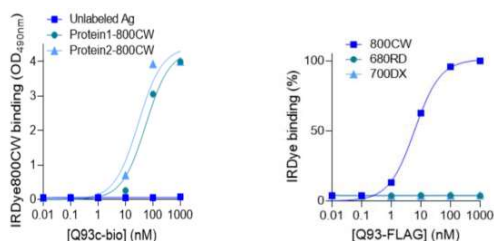
Formulation: 0.2 µm filtered solution in PBS.

Mol. Weight: 14.6 kDa
Ext. Coeff. (ε): 27055
A₂₈₀ at 1g/L: 1.8

Storage: Shipped on blue ice. Store at 4 °C or -20 °C (aliquots). Addition of 0.02% sodiumazide is optional.

Applications: ELISA

Examples:



Left) Binding of Q93c-bio to different 800CW-labeled proteins in ELISA. Bound VHH were detected with streptavidinHRP.
Right) Binding of Q93-FLAG to 800CW, 680RD or 700DX-labeled proteins in ELISA. VHH was detecting anti-FLAG antibody.

References:

- [LI-COR website](#)
- [Oliveira et al. \(2012\) Mol Imaging. 11\(1\):33-46](#)
- [ClinicalTrials.gov](#)
- [IRDye is a trademark from LI-COR Inc](#)