

# Product Sheet



**QVQ**

QUALITY IN ANTIBODIES

Yalelaan 1  
3584 CL Utrecht  
The Netherlands  
+31 30 253 3421

www.qvquality.com  
KvK: 30274082  
VAT: 8215.17.168  
NL88 RABO0153194936

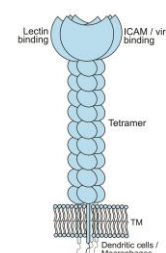
## Dendritic Cell-Specific Intercellular adhesion molecule-3-Grabbing Non-integrin (DC-SIGN)

**Catalogue no.:** Q51c

**Clone name:** 3H8

**Product:** VHH directed against DC-SIGN

**Target:** Dendritic Cell-Specific Intercellular adhesion molecule-3-Grabbing Non-integrin (DC-SIGN or CD209, UniprotKB Q9NNX6), is a C-type lectin pathogen receptor that is expressed on the surface of macrophages and dendritic cells. It is involved in the primary immune response by taking up and degrading pathogens. On macrophages, DC-SIGN binds to pathogen associated molecular patterns (PAMPs), which triggers phagocytosis. On dendritic cells, it also recognized pathogens but in addition, interactions of DC-SIGN with intercellular adhesion molecules (ICAMs) also facilitate dendritic cell rolling along blood endothelium and CD4+ T cell activation. DC-SIGN is also used as target for vaccination.<sup>1-5</sup>



**Source:** Recombinant monoclonal VHH (Llama glama), purified from *S.cerevisiae* using affinity chromatography. Immunization with cancer cells. Phage-display selection on recombinant DC-SIGN using total elution.

**Specificity:** Human DC-SIGN.

**Formulation:** 0.2 µm filtered solution in PBS.

**Mol. Weight:** 15.5 kDa

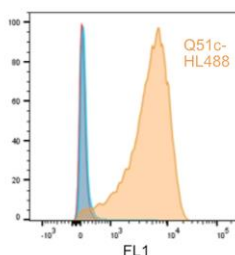
**Ext. Coeff. (ε):** 27055

**A<sub>280</sub> at 1g/L:** 1.7

**Storage:** Shipped on blue ice. Store at 4 °C or -20 °C (aliquots). Addition of 0.02% sodiumazide is optional.

**Applications:** ELISA, IF, FACS

**Examples:**



Binding of Q51c-HL488 to dendritic cells in flow cytometry.

### References:

- 1 Geijtenbeek et al., (2000) *Cell*, 100(5):575-85
- 2 Engering et al., (2002) *J Immunol*, 168(5):2118-26
- 3 McGreal et al., (2005) *Curr Opin Immunol*, 17(1):18-24
- 4 Geijtenbeek et al., (2000) *Nat Immunol*, 1(4):353-7
- 5 Fehres et al., (2015) *J Invest Dermatol*, 135(9):2228-2236