

Product Sheet



QVQ

QUALITY IN ANTIBODIES

Yalelaan 1
3584 CL Utrecht
The Netherlands
+31 30 253 3421

www.qvquality.com
KvK: 30274082
VAT: 8215.17.168
NL88 RABO0153194936

Hepatocyte Growth Factor Receptor (HGFR)/Met

Catalogue no.: Q22c

Clone name: QME-G2

Product: VHH directed against Met

Target: The hepatocyte growth factor receptor (HGFR, cMet or Met, UniProtKB P08581) is a single membrane spanning receptor tyrosine kinase that is activated by hepatocyte growth factor (also known as scatter factor). Met is expressed at the cell surface as a 195 kDa hetero-dimeric protein. The extracellular part of Met contains three domain types: an N-terminal 7-bladed β -propellor-like SEMA domain (semaphorin), a PSI domain (plexin, semaphorin, integrin-like) and four IPT-domains (immuno-globulin-like). Blades 2-3 of the SEMA domain and IPT 3-4 interact with its natural ligand HGF (see figure).¹⁻³

Source: Recombinant monoclonal VHH (Llama glama), purified from *S.cerevisiae* using affinity chromatography. Immunization with A431 cells. Phage-display selection on captured HGFR ectodomain with total elution.

Specificity: Human HGFR/Met. Epitope: Blades 2-6 of the SEMA domain. Competes for HGF binding.⁴

Formulation: 0.2 μ m filtered solution in PBS.

Mol. Weight: 15.8 kDa

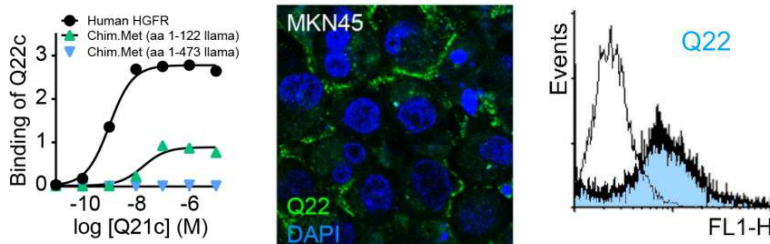
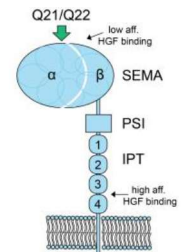
Ext. Coeff. (ϵ): 35535

A₂₈₀ at 1g/L: 2.2

Storage: Shipped on blue ice. Store at 4 °C or -20 °C (aliquots). Addition of 0.02% sodiumazide is optional.

Applications: ELISA, IF, FACS, IP, IHC

Examples:



Binding of Q22c to either fully human HGFR/Met (black circles) or llama/human HGFR/Met chimera in ELISA. Binding of Q22-decorated albumin nanoparticles to MKN-45 cells. And binding of Q22 to A431 cells in FACS.

References:

- 1 Cooper et al., (1984) *Nature* 311, 29-33.
- 2 Stamos et al., (2004), *EMBO J* 23, 2325-2335
- 3 Bradley et al., (2017), *Nat Rev Clin Oncol* 14, 562-576
- 4 Heukers et al., (2014) *Biomaterials* 35, 601-610